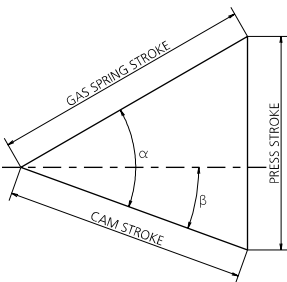
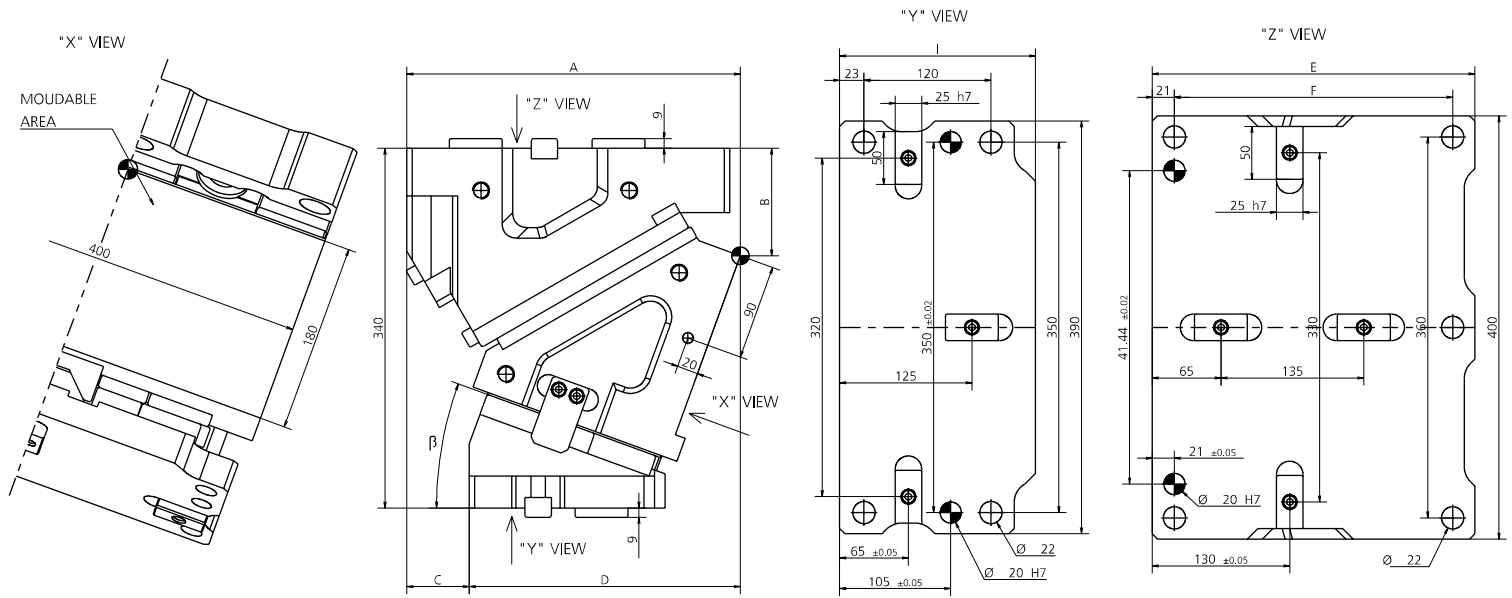


| POS. | DESCRIPTION | Q.TY |
|------|--|----------|
| 001 | CUNEO / WEDGE / DRUCKKEIL | 1 |
| 002 | SLITTA / SLIDER / LAGERKEIL | 1 |
| 003 | CORPO CAMMA / CAM BODY / GRUNDGEHÄUSE | 1 |
| 004 | STAFFA DI AGGANCO / BRACKET ATTACHMENTS / BRACKETBEFESTIGUNG | 2 |
| 005 | AGGANCO SLITTA / SLIDE ATTACHMENT / SCHLITTENBEFESTIGUNG | 2 |
| 006 | CHIAVETTA / KEY / SCHLÜSSEL | 7 |
| 007 | CHIAVETTA / KEY / SCHLÜSSEL | 1 |
| 008 | PIASTRA DI SCORRIMENTO / WEAR PLATE / DRUCKPLATTE | 1 |
| 009 | CILINDRO AD AZOTO / NITROGEN CYLINDER / STICKSTOFFZYLINDER | 2 |
| 010 | PUNTALINO / BUMP STOP / STOSSDÄMPFERSPITZE | 4 |
| 011 | SENSORE DI SICUREZZA / SECURITY SENSOR / SENSOR FÜR SICHERHEIT | 1*OPTION |
| 012 | FINECORSO / LIMIT SWITCHES / ENDSCHALTER | 2 |

| POS. | DESCRIPTION | Q.TY |
|------|---|------|
| 015 | FINECORSO / LIMIT SWITCHES / ENDSCHALTER | 2 |
| 016 | PIASTRA DI SCORRIMENTO / WEAR PLATE / DRUCKPLATTE | 2 |
| 017 | PIASTRA DI SCORRIMENTO / WEAR PLATE / DRUCKPLATTE | 2 |
| 018 | PIASTRA DI SCORRIMENTO / WEAR PLATE / DRUCKPLATTE | 1 |
| 019 | PIASTRA DI SCORRIMENTO / WEAR PLATE / DRUCKPLATTE | 1 |
| 020 | PIASTRA DI SCORRIMENTO / WEAR PLATE / DRUCKPLATTE | 1 |
| 021 | PIASTRA DI SCORRIMENTO / WEAR PLATE / DRUCKPLATTE | 1 |
| 022 | PIASTRA DI SCORRIMENTO / WEAR PLATE / DRUCKPLATTE | 2 |
| 023 | PIASTRA DI SCORRIMENTO / WEAR PLATE / DRUCKPLATTE | 2 |
| 024 | PIASTRA DI SCORRIMENTO / WEAR PLATE / DRUCKPLATTE | 1 |
| 025 | PIASTRA DI SCORRIMENTO / WEAR PLATE / DRUCKPLATTE | 2 |



| β | α | PRESS STROKE | GAS SPRING STROKE | CAM STROKE | EXTRACTION FORCE (daN) | CUTTING FORCE (daN) |
|---------|----------|--------------|-------------------|------------|------------------------|---------------------|
| 0° | 50° | 39.1 | 51 | 32.8 | 3660 | 88200 |
| 5° | 50° | 39.2 | 51 | 36.2 | 3650 | 88200 |
| 10° | 50° | 39.7 | 51 | 39.7 | 3640 | 88200 |
| 15° | 50° | 40.4 | 51 | 43.3 | 3630 | 88200 |
| 20° | 50° | 41.6 | 51 | 47.0 | 3620 | 88200 |
| 25° | 50° | 43.1 | 51 | 51.0 | 3620 | 88200 |
| 30° | 50° | 45.1 | 51 | 55.3 | 3610 | 88200 |
| 35° | 50° | 47.7 | 51 | 60.1 | 3600 | 88200 |
| 40° | 50° | 51.0 | 51 | 65.6 | 3590 | 88200 |
| 45° | 50° | 55.3 | 51 | 71.9 | 3580 | 88200 |
| 50° | 50° | 60.8 | 51 | 79.3 | 3570 | 88200 |
| 55° | 55° | 72.8 | 51 | 88.9 | 3880 | 88200 |
| 60° | 60° | 88.3 | 51 | 102.0 | 4290 | 88200 |
| 65° | 65° | 98.6 | 46 | 108.8 | 4680 | 88200 |
| 70° | 70° | 112.6 | 41 | 119.9 | 5230 | 88200 |
| 75° | 75° | 115.7 | 31 | 119.8 | 6130 | 88200 |



| CODE | β | A | B | C | D | E | F | I |
|--------------|---------|--------|--------|------|--------|-----|-----|-----|
| 0154.40**-00 | 0° | 295 | 68 | 115 | 180 | 280 | 238 | 185 |
| 0154.40**-05 | 5° | 305.13 | 77.72 | 106 | 199.13 | 290 | 248 | 185 |
| 0154.40**-10 | 10° | 308.87 | 86.26 | 90 | 218.87 | 295 | 253 | 185 |
| 0154.40**-15 | 15° | 312.21 | 94.59 | 74 | 238.21 | 300 | 258 | 185 |
| 0154.40**-20 | 20° | 315.18 | 101.67 | 59 | 256.18 | 305 | 263 | 185 |
| 0154.40**-25 | 25° | 312.82 | 108.46 | 40 | 272.82 | 305 | 263 | 185 |
| 0154.40**-30 | 30° | 312.13 | 115.95 | 23 | 289.13 | 310 | 268 | 185 |
| 0154.40**-35 | 35° | 312.16 | 127.11 | 9 | 303.16 | 310 | 268 | 185 |
| 0154.40**-40 | 40° | 308.92 | 138.91 | -17 | 325.92 | 310 | 268 | 185 |
| 0154.40**-45 | 45° | 303.46 | 154.33 | -33 | 336.46 | 310 | 268 | 185 |
| 0154.40**-50 | 50° | 301.8 | 171.35 | -49 | 350.8 | 315 | 273 | 185 |
| 0154.40**-55 | 55° | 292.97 | 179.42 | -72 | 364.97 | 315 | 273 | 180 |
| 0154.40**-60 | 60° | 288.72 | 178.36 | -88 | 376.72 | 315 | 273 | 180 |
| 0154.40**-65 | 65° | 291.61 | 187.08 | -101 | 392.61 | 315 | 273 | 180 |
| 0154.40**-70 | 70° | 288.88 | 197.14 | -121 | 409.88 | 315 | 273 | 180 |
| 0154.40**-75 | 75° | 283.54 | 196.04 | -143 | 426.54 | 315 | 273 | 180 |

| CAM COD. | GAS SPRING | KEYS | ANGLE |
|----------|--------------------------|---------------------------------|-----------------------------|
| | 1=STANDARD GAS SPRING | 1=KEYS MOUNTED | |
| 0154.40 | 2= GAS SPRING NOT FILLED | 2= KEYS ONLY ADDED, NOT MOUNTED | -00= ANGLE (FROM 0° TO 75°) |
| | 3= WITHOUT GAS SPRING | 3= WITHOUT KEYS | |

11 PATENT PENDING

11 (9003) SENSORE / SENSOR / SENSOR



ESEMPIO / EXAMPLES/ BEISPIELE / EXEMPLES

0154.4011-20 = CAM UNIT **0154.40**, STANDARD GAS SPRING (**1**), KEYS MOUNTED (**1**), ANGLE **20°**

0154.4032-50 = CAM UNIT **0154.40**, WITHOUT GAS SPRING (**3**), KEYS ONLY ADDED, NOT MOUNTED (**2**), ANGLE **50°**